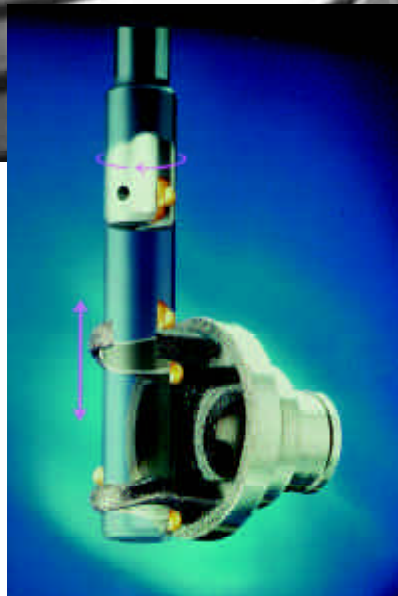
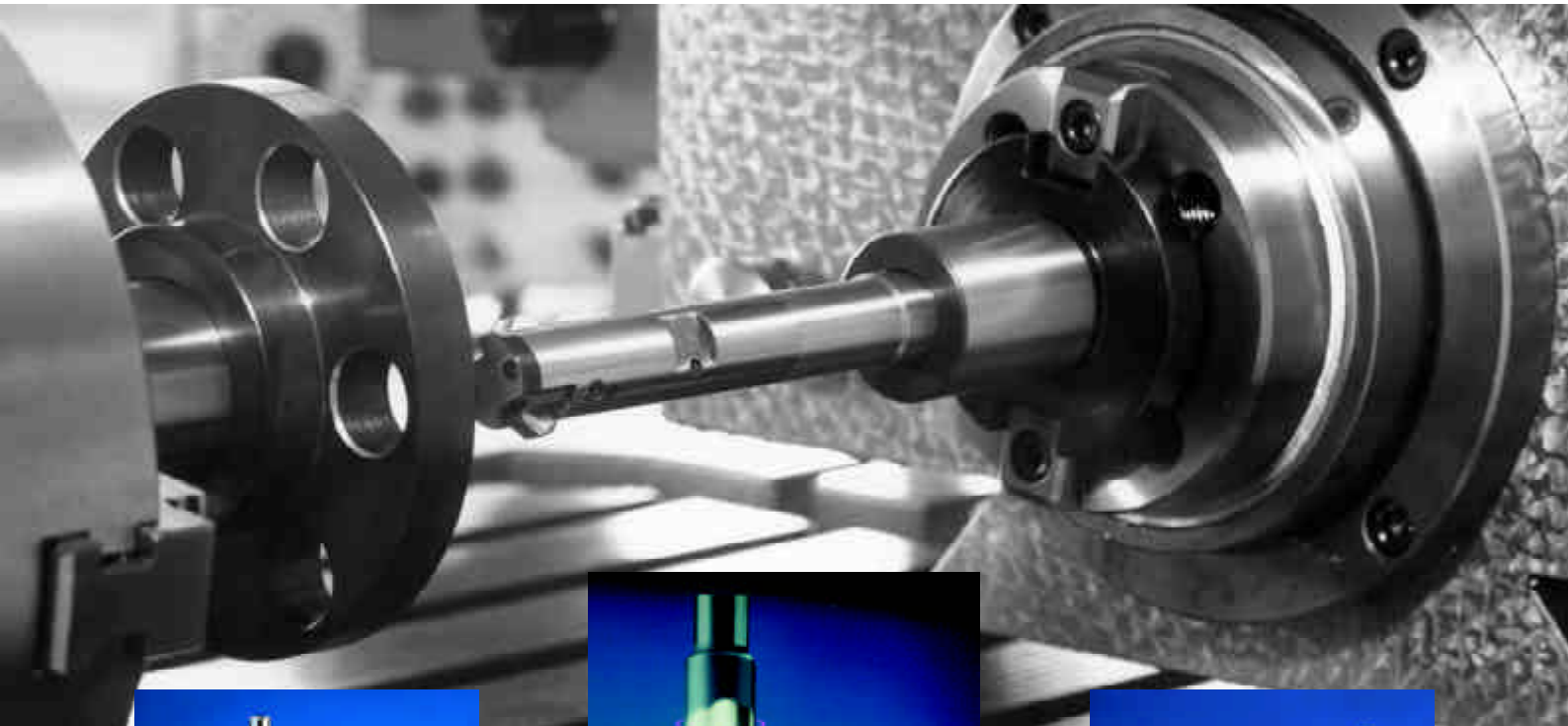


# HEULE HEULE HEULE

WERKZEUG AG



B R E A K T H R O U G H T E C H N O L O G Y

FOR FRONT AND BACK DEBURRING,  
CHAMFERING AND COUNTERSINKING



Are you still deburring by hand? Frustrated with inconsistent chamfering and tool life?

## Let HEULE technology solve your finishing problems!

# COFA

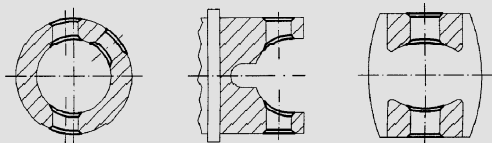
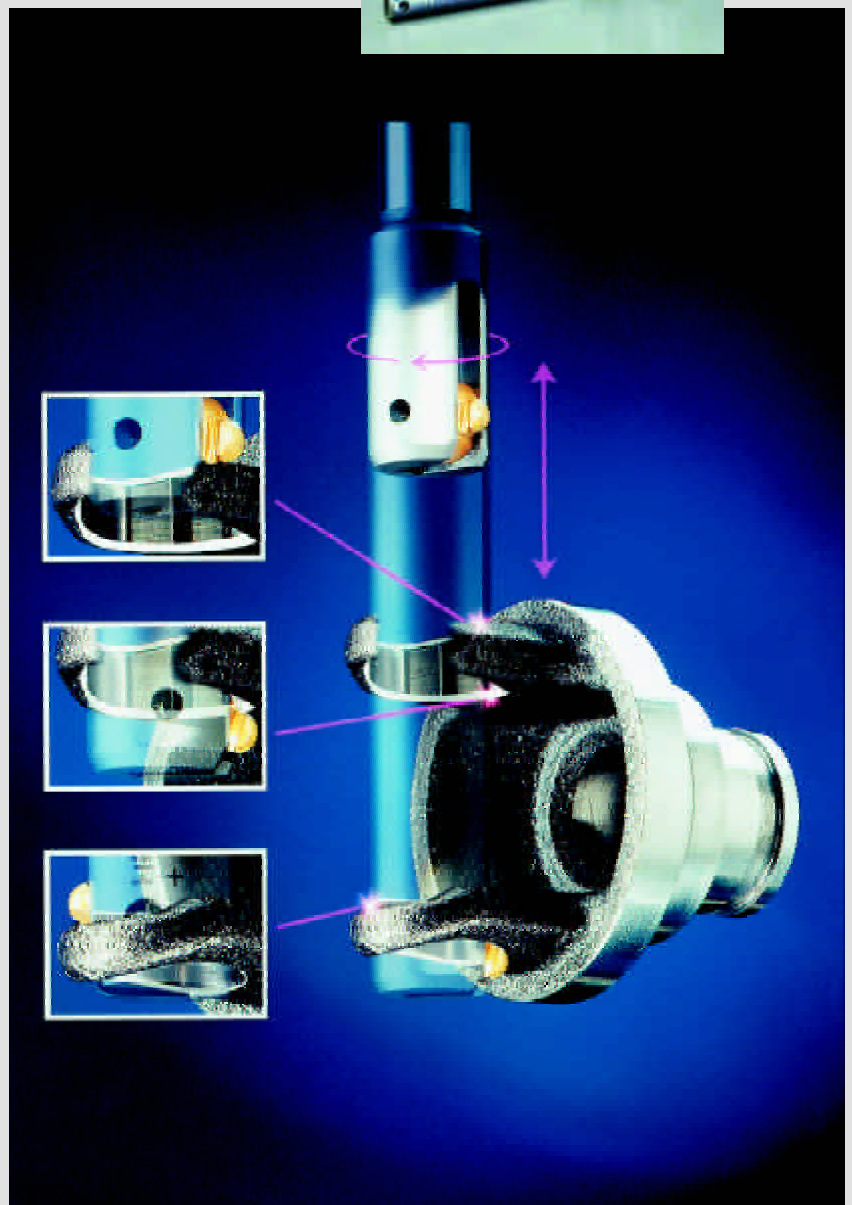
## The Universal Deburring Tool

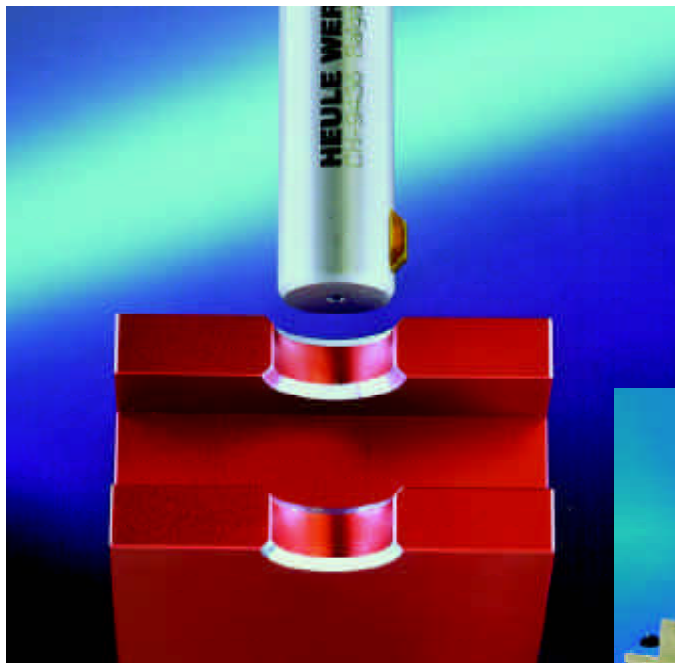
The COFA deburring tool removes burrs on the front and back of a drilled through-hole on even and uneven surfaces in a single cycle

- Consistent edge break every time
- The unique ability to deburr even and uneven surfaces
- Tools available in sizes from 4mm upwards
- Carbide blades with different coatings for higher productivity
- No adjusting or presetting required
- Very simple and easy to use



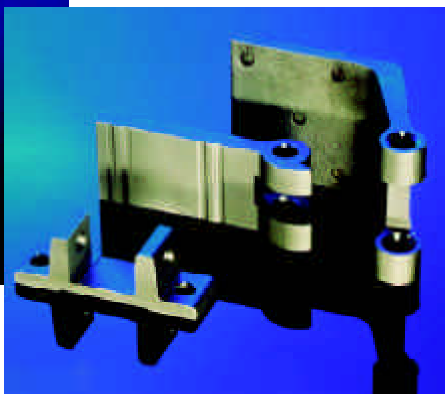
*COFA-Cassette for large bores*





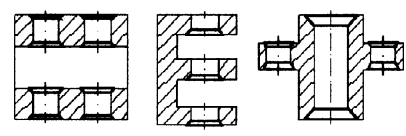
# SNAP

Simple and economical front and back chamfering tool



Easy handling and quick blade change make the tool appropriate for any manufacturing environment

- Easy blade change in a few seconds
- No adjusting required, ideal for high volume manufacturing
- Carbide-TiN inserts for higher RPM and tool life
- Exact chamfers using DEFA geometry blades
- Absolutely safe for reamed and finished holes



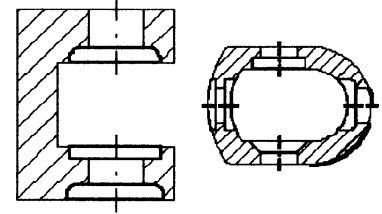
# SOLO

Reliable automatic front and back counterboring and spotfacing tool



Front and back spotfacing and form sinking in a single work operation - **no** anti-rotation device or machine adaptations are required

- Tool is suitable for all CNC, transfer, dial and multi-spindle machines
- Only clockwise spindle rotation required to activate the fully mechanical operating system. No need for any contact mechanism or coolant pressure
- Easy handling - quick blade change
- The sealed tool system guarantees operations in all production situations





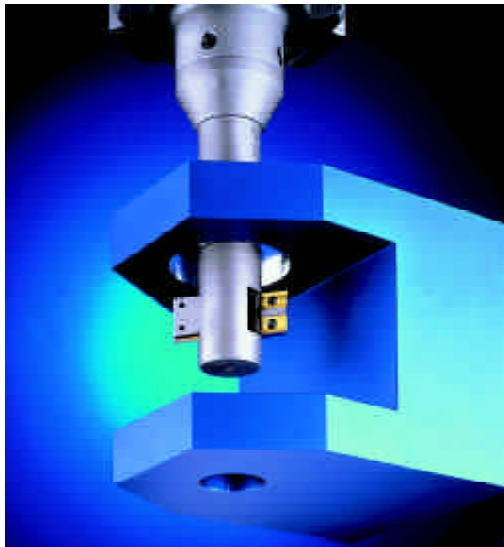
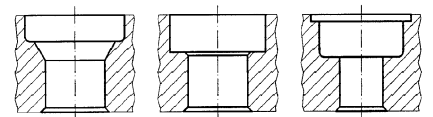
## Combi

Combine the latest technology for producing holes with our deburring and chamfering system



Save time, money and space on your machining center with HEULE combination tooling

- Reduce tool changes and cycle times to boost productivity
- Custom made tooling for boring, drilling and countersinking with back deburring
- Ideal for automotive applications: i.e. wheel and brake disc manufacturers



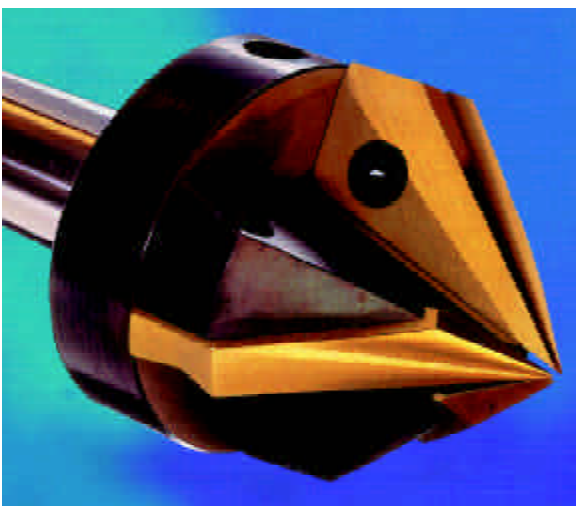
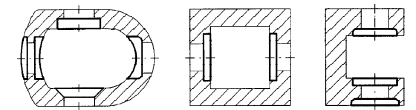
## GH-Z/E

Automatic front and back spotfacing systems



Twin-bladed front and back counterboring tools produce accurate back spotfaces, large countersinks and precision forms

- Rigid blades keyed within the blade housing offer balanced force distribution
- No chip interference with blade activation
- Suitable for CNC machines



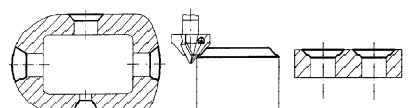
## GH-K

Precision, chatter-free replaceable tip countersinks

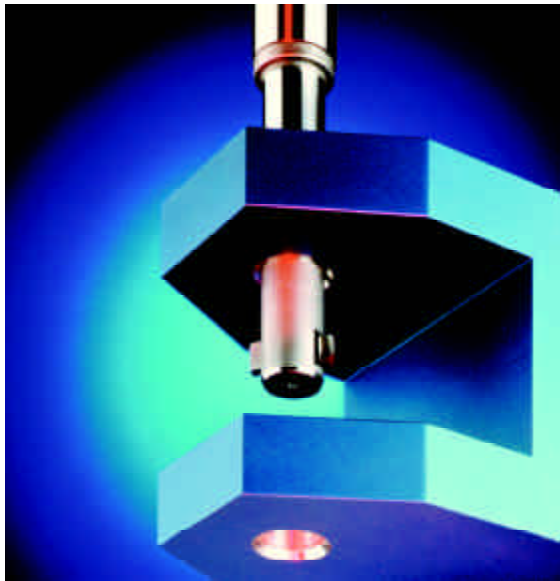


The GH-K countersink blades are precision ground as a matched set to achieve unmatched countersink finishes

- Inserts are easily reground to original accuracy
- Absolutely chatter-free
- Used in manual and CNC applications with a 3 to 85mm countersink range



# PRECISION TWIN-BLADED CHAMFERING SYSTEMS

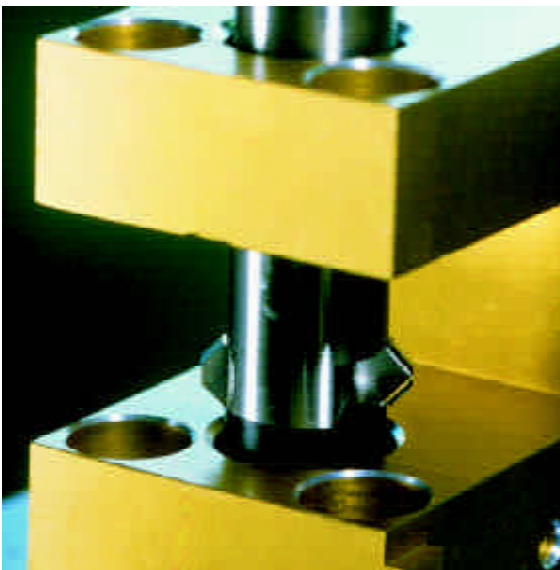
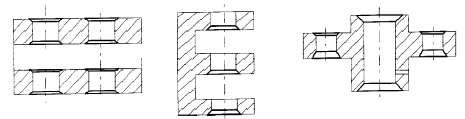


## Adjustable front and back chamfering

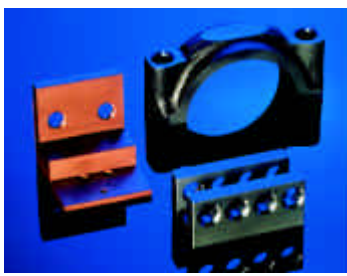


Double-bladed DEFA chamfering tools create preadjusted front and back chamfers in a single work operation without stopping or reversing the spindle

- Sliding-surface blade geometry prevents damage to finished hole surfaces
- Repeatable chamfers regardless of burrs or material

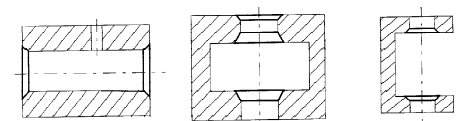


## Economical forward and reverse chamfering of bores



The patented blade control system of the GH-S tool allows selective chamfering of multiple hole surfaces

- Balanced cutting for exceptional tool life
- Quality surface finish on all types of machines
- Modular tooling for a large range of hole diameters



## HEULE WERKZEUG AG

CH-9436 Balgach/Switzerland

Telephone +41-(0)71 726 38 38  
Telefax +41-(0)71 726 38 39  
Internet [www.heule.com](http://www.heule.com)  
E-Mail [info@heule.com](mailto:info@heule.com)

Represented by:

## USA: HEULE TOOL CORPORATION

4722 A Interstate Drive  
Cincinnati, Ohio 45246 / USA

Telephone +1 (513) 860 99 00  
Telefax +1 (513) 860 99 92  
Internet [www.heuletool.com](http://www.heuletool.com)  
E-Mail [usa@heule.com](mailto:usa@heule.com)

## GB: HEULE TOOL UK LTD

1 Beacon Close, Groby  
LEICESTER LE6 0GB  
Great Britain

Telephone +44(0)116 287 9062  
Telefax +44(0)116 287 1321  
Internet [www.heule.com](http://www.heule.com)  
E-Mail [heuleuk@heule.com](mailto:heuleuk@heule.com)

*Over 40 years of  
manufacturing quality  
cutting tools*



HEULE manufactures cutting tools of the highest quality and precision, consistent with Swiss craftsmanship, for use in the machine tools of some of the world's largest manufacturers and also the smallest machine shops. Being a registered ISO-9001 company confirms HEULE's commitment to quality and customer service.

A worldwide distribution network as well as our subsidiaries HEULE TOOL CORPORATION, located in Cincinnati, Ohio, USA and HEULE TOOL UK LTD located in Leicester, England, offer an extensive local inventory and engineering support for quick delivery and outstanding customer service.

HEULE working with customers to help improve productivity and quality.



**HEULE**